

# Navigating the Workforce Landscape: An Overview of the Workforce System, Registered Apprenticeship, and Funding Mechanisms



April 22, 2024

# Presenters



**Nithya Pramekumar**

Project Director

Safal Partners



**Alan Dodkowitz**

Subject Matter Expert

Safal Partners



# Center of Excellence Overview



- U.S. DOL initiative to increase systems alignment across apprenticeship, education, and workforce
- Led by Safal Partners; 5 national partners
- We provide no-cost TA including:
  - Monthly webinars
  - Quarterly virtual office hours
  - Individual TA/coaching sessions
  - Online resources (desk aids, guides, frameworks, etc.)



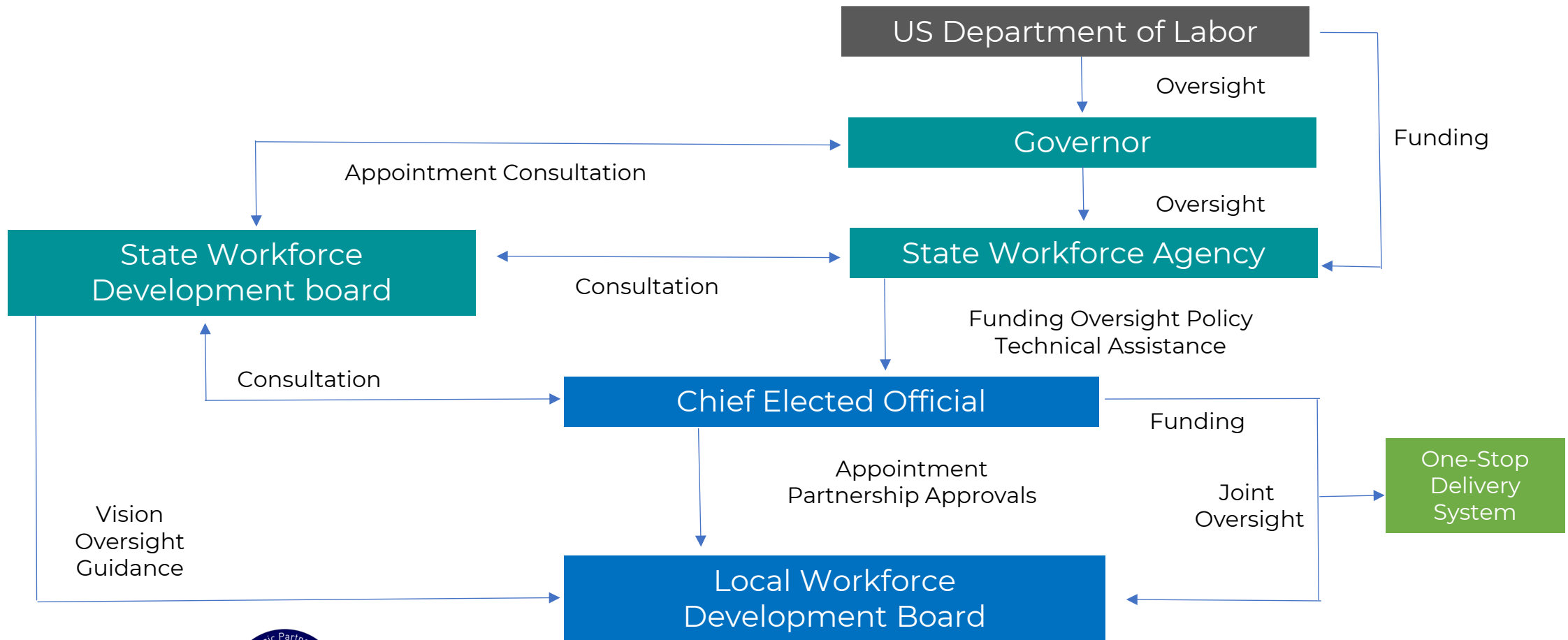
[Visit our website, request TA](#)



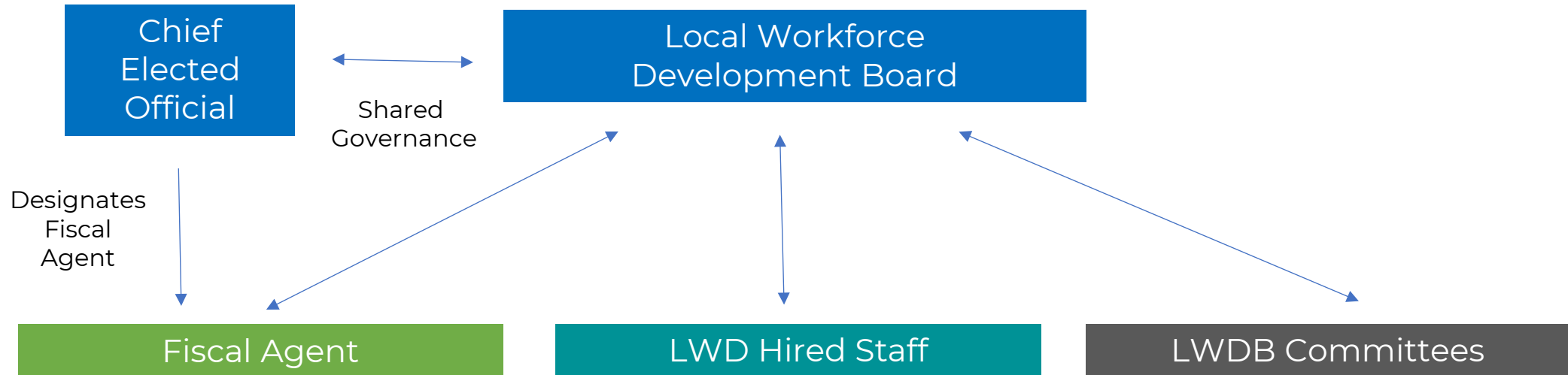
# Overview of the Workforce System



# Overview of the Workforce System



# Overview of the Local Workforce System



# Introduction to the Workforce System and WIOA

- LWDBs are regional bodies that play a pivotal role in coordinating and overseeing workforce development initiatives within a specific locality or region.
- The primary purpose of LWDBs is to align workforce training and education programs with the needs of local employers, industries and job seekers.
- LWDBs collaborate with various stakeholders, including businesses, educational institutions, government agencies and community organizations, to strategize and implement workforce development policies and programs.



# How Workforce Boards Can Help Education Providers

- Provide WIOA Individual Training Account (ITA) funding to support apprentices' RI costs
- Make connections with employers, sponsors
- Host convenings between education and industry
- Provide pipeline of potential students to enroll in programs
- Add programs to the Eligible Training Provider List (ETPL)
- Support the development of RI curriculum using labor market information and industry standards



# Overview of Registered Apprenticeship



# Registered Apprenticeship Defined

## Apprenticeship: A Proven Workforce Solution

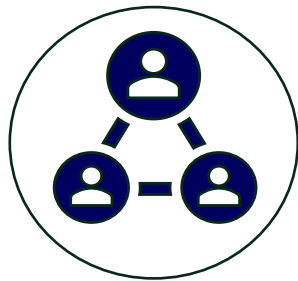
Registered Apprenticeship is a proven, customizable, and structured model to find and train new talent as well as upskill current workers in critical occupations.



# Five Core Components of Apprenticeship



**Employer  
Involvement**



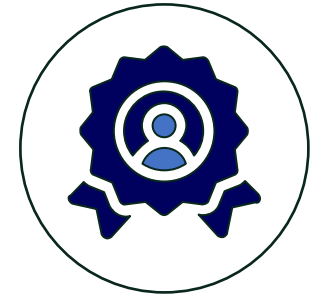
**Structured  
On-the-Job  
Learning  
(OJL)**



**Related  
Instruction  
(RI)**



**Rewards  
for  
Skill Gains**



**National  
Occupational  
Credential**

# Roles of Apprenticeship



## Sponsor

An organization that agrees to operate an apprenticeship program and in whose name the program is registered.



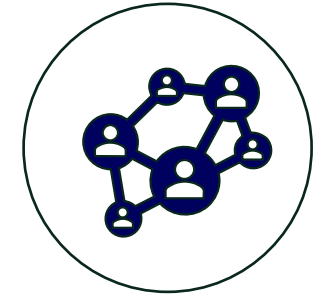
## RI Provider

Entity that provides instruction to apprentices in the designated occupation's core knowledge, skills, and abilities.



## Employer

Hires and provides paid on-the-job learning (OJL) for apprentices under supervision of a designated mentor who is a skilled professional in that occupation.



## Partner

Organizations committed to assisting RA programs. They can play one or more roles.

# Accessing Workforce System Funding



# System Alignment & Partnership



# WIOA Funding, Supports for RA

## Related Training and Instruction

Under WIOA, all classroom training is funded through individual training accounts (ITAs). Programs must be on the state's eligible training provider list to take advantage of potential funding. In addition to ITAs for individual apprentices, utilizing contracts for cohort training is also possible.

## On-the-Job Training

On-the-job training (OJT) is funded through contracts, not ITAs. OJT contracts can cover one or multiple apprentices with the reimbursement for OJT typically at 50% of the apprentices' wage rate.

## Supportive Services

WIOA formula funds can be utilized to provide a range of supportive services such as transportation and childcare. Also, if an ITA is used to fund the related training and instruction, the ITA can also be used to provide supportive services.



# Questions and Discussion



# Contact Us, Become a Partner

- ✓ **Receive** no-cost expert TA, materials, and assistance
- ✓ **Network** with potential partners nationwide
- ✓ **Be** nationally recognized for your work

Scan for  
Partner Form



# THANK YOU FOR JOINING US

*Email us your questions at [RA\\_COE@SafalPartners.com](mailto:RA_COE@SafalPartners.com)*

For more information, visit: [dolcoe.safalapps.com](https://dolcoe.safalapps.com)

