

# Keys to Effective Apprenticeship Partnerships



September 5<sup>th</sup>, 2023

# Center of Excellence Overview



- Led by Safal Partners (grant awarded July 2021), national partners include NAWDP, COABE, NDIC, FASTPORT and WIA
- We provide no-cost TA to accelerate sustainable partnerships, alignment of apprenticeship, workforce, and education systems to accelerate RA adoption.



## WELCOME TO THE CENTER OF EXCELLENCE

Registered apprenticeship is the proven gold standard in workforce development. Better aligning industry, workforce and education around apprenticeship can help build a stronger, more resilient, and future-ready American workforce.

The Registered Apprenticeship Technical Assistance Center of Excellence is focused on helping key stakeholders across these three systems build and scale strategic partnerships to put more American workers on high-quality apprenticeship career pathways.

[READ MORE](#)



[Visit our website, request TA](#)



# Center Work Will Include...

- Facilitating **partnership building** and connectivity across workforce systems
- Supporting **new RA Program (RAP) development**
- Creating **pipelines** (i.e., pre-apprenticeship models, career pathways)
- **Providing TA** on RAP models, WIOA co-enrollment
- Accelerating **integrated service delivery**
- **Informing new policies and programs** to support RAP integration

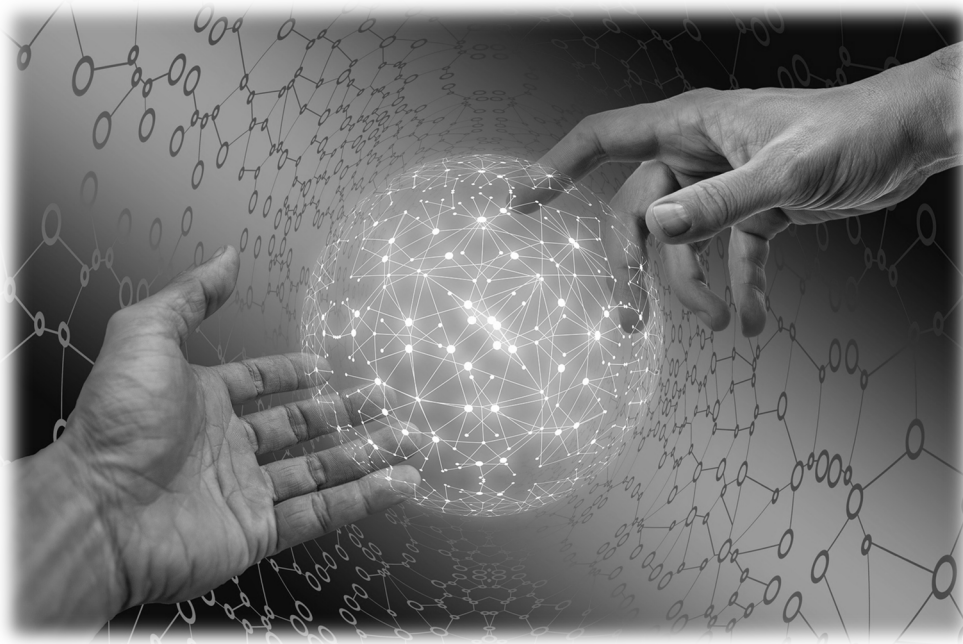




# Key Apprenticeship Stakeholders



# What Do Partners Provide?



-  Paid On-the-Job Learning (OJL)
-  Related Instruction (RI)
-  Supportive Services
-  Technical Assistance (TA)
-  Funding
-  Apprentice/Employer Recruiting
-  RA Program Awareness

# Key Apprenticeship Stakeholders

- USDOL Office of Apprenticeship or State Apprenticeship Agency
- RA Program Sponsors & Employers
- Educational Institutions
- Unions/Labor Organizations
- Intermediaries
- Workforce System Organizations
- Community-Based Organizations





# Office of Apprenticeship (OA) or State Apprenticeship Agency (SAA)

## **A State's RA System Staff Will:**

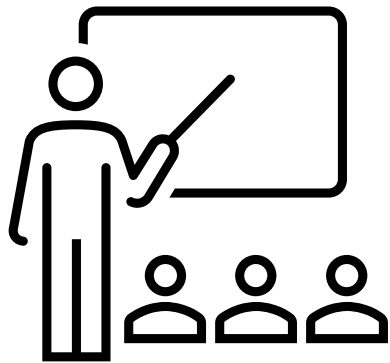
- Explain Requirements & Process of RA Programs
- Provide Policy Guidance
- Inform about Fed & State Resources
- Connect to State & Local Partners
- Gateway to Contacts



# RA Sponsors & Employers

## Provide:

- On the Job Learning (OJL)



## Look for Partners to Provide:

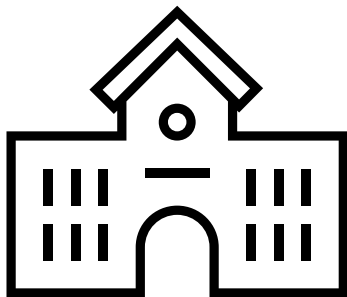
- Related Instruction (RI)
- Supportive Services (SS)
- Technical Assistance (TA)
- Funding
- Apprentice/Employer Recruiting
- RA Program Awareness



# Educational Institutions

## Provide:

- Related Instruction (RI)
- RA Program Awareness
- RA Program Resources



## Look for Partners to Provide:

- Technical Assistance (TA)
- On the Job Learning (OJL)
- Supportive Services
- Funding
- Apprentice/Employer Recruiting

# Workforce Boards/Organizations

## Provide:

- RA Program Awareness
- RA Program Resources
- Supportive Services (SS)
- Technical Assistance (TA)
- Funding
- Apprentice/Employer Recruiting

## Look for Partners to Provide:

- Related Instruction (RI)
- On the Job Learning (OJL)



# Union & Labor Organizations

## Provide:

- On the Job Learning (OJL)
- Related Instruction (RI)
- Apprentice/Employer Recruiting



## Look for Partners to Provide:

- Related Instruction (RI)
- Supportive Services (SS)
- Funding
- Apprentice/Employer Recruiting
- RA Program Awareness

# Intermediaries



## Provide:

- Technical Assistance (TA)
- Funding
- Apprentice/Employer Recruiting
- RA Program Awareness

## Look for Partners to Provide:

- On the Job Learning (OJL)
- Related Instruction (RI)
- Supportive Services (SS)
- Funding
- Apprentice/Employer Recruiting





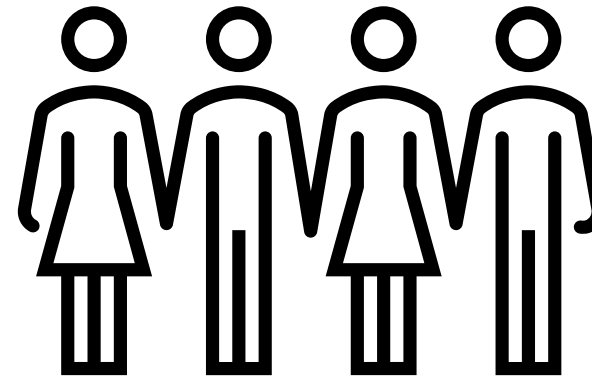
# Community-Based Organizations

## Provide:

- Supportive Services (SS)
- Apprentice/Employer Recruiting
- RA Program Awareness

## Look for Partners to Provide:

- On the Job Learning (OJL)



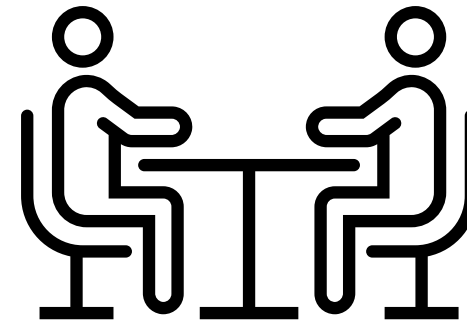
# Building Partnerships

## Pre-Apprenticeship Partners:

- Industry-aligned curriculum
- Simulated work experience
- Facilitated entry into a RA Program
- Supportive Services
- Sustainable Partnerships

## Finding Partnerships:

- Gaps
- Hurdles
- Network Expansion



# Questions and Discussion



# Contact Us

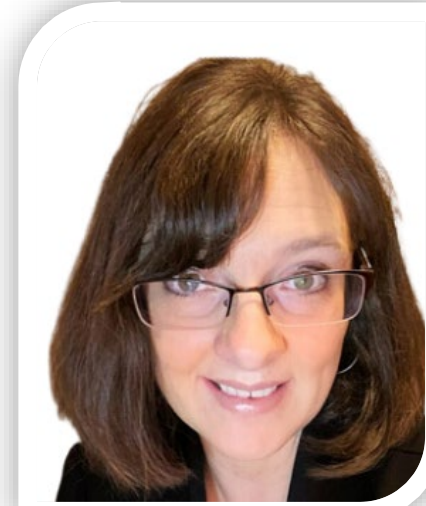


**Katie Adams**

Chief Delivery Officer

Safal Partners

[Katie.Adams@safalpartners.com](mailto:Katie.Adams@safalpartners.com)



**Melissa Aguilar-Southard**

Director

Safal Partners

[melissa.aguilar-southard@safalpartners.com](mailto:melissa.aguilar-southard@safalpartners.com)





# Resources

## Workforce Board Guide to Identify Partnership



## Registered Apprenticeship Partner Profile Questionnaire

The image shows the cover of a questionnaire. At the top right, the SAFAL PARTNERS logo is displayed. Below it, the title 'REGISTERED APPRENTICESHIP (RA) PARTNER PROFILE QUESTIONNAIRE' is written in bold. A paragraph of text describes the purpose of the questionnaire: 'This questionnaire is intended to help you build a network in your area around Registered Apprenticeship (RA). With the information gathered here, your board should be better able to engage with and convene RA stakeholders to expand RA program opportunities. It is designed to be used in conjunction with the USDOL RA TA Center of Excellence "Workforce Board Guide to Identifying Pre-Apprenticeship and Apprenticeship Partners" publication. This publication and more information on the Center can be found online at dolcoe.safalapps.com.' Below this text are three input fields: 'Organization Name:', 'Website:', and 'Organization Type:'. To the right of these fields is a large QR code.

# Become a Center Partner

- ✓ **Receive** no-cost expert TA, materials, and assistance
- ✓ **Network** with potential partners nationwide
- ✓ **Be** nationally recognized for your work

Scan for  
Partner Form



# THANK YOU FOR JOINING US

*Email us your questions at [RA\\_COE@SafalPartners.com](mailto:RA_COE@SafalPartners.com)*

For more information, visit: [dolcoe.safalapps.com](https://dolcoe.safalapps.com)

