

# DOL RA TA Center of Excellence Strategic Partnerships and Systems Alignment

*NASTAD Conference*



September 12<sup>th</sup>, 2023

# The Center's Work

- 1) Supporting increase of RA integration in the workforce systems while advancing education and workforce system alignment,
- 2) Collaborating with key stakeholders already involved in system alignment efforts,
- 3) Leveraging, aligning, and building on existing apprenticeship system alignment efforts; and
- 4) Supplementing, supporting Departmental guidance and TA efforts to promote RA and clarify the use of WIOA funds; doubling current statewide WIOA support/participation for RA programs.



# TA, Training Delivery

- Online
  - COE Website
  - Quarterly Virtual Office Hours
  - Monthly Webinars
  - TA Requests
  - Bi-monthly eNewsletters
- In-Person/Hybrid/Virtual
  - Training on key topics
  - Conference presentations
- Products
  - Toolkits, Frameworks, Reports, Tip Sheets, Templates



## WELCOME TO THE CENTER OF EXCELLENCE

Registered apprenticeship is the proven gold standard in workforce development. Better aligning industry, workforce and education around apprenticeship can help build a stronger, more resilient, and future-ready American workforce.

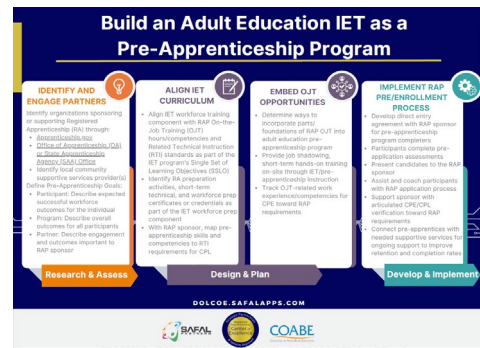
The Registered Apprenticeship Technical Assistance Center of Excellence is focused on helping key stakeholders across these three systems build and scale strategic partnerships to put more American workers on high-quality apprenticeship career pathways.

[READ MORE](#)

<https://dolcoe.safalapps.com>



# Spotlight TA, Products



- Workforce System Alignment

- National “Workforce System RA Baseline Knowledge Report”
- Virtual “Industry and Workforce Forum”
- 3-day virtual “RA Workforce Academy”
- Upcoming:
  - National BSR Training
  - ATR Training

- Education System Alignment

- National “Adult Education RA Baseline Knowledge Report”
- “Integrated Education & Training (IET) RA Framework”
- Upcoming:
  - IET RA Design Toolkit
  - Draft CTE Youth RA Toolkit

- Strategic Partnerships

- “Guide to Identifying Pre-Apprenticeship and RA Partners”
- “Questionnaire for Partnership Development”
- “Developing and Expanding an RA Program” Questionnaire



# Supporting Your Agency's Work

- We want your input, showcase examples for TA product development
- Utilize us to:
  - Convene key stakeholders, partners for alignment work  
*(i.e. Industry Employers, LWDB Executive Directors & BSRs, CTE and AE Leadership)*
  - Provide training for your key stakeholders, workforce system customers
  - Train your ATRs and state BSRs on service integration
  - Collaboratively review workforce system & RA data – identify areas for training, TA



# Thank You



**Melissa Aguilar-Southard**  
Director, Safal Partners



[melissa.aguilar-southard@safalpartners.com](mailto:melissa.aguilar-southard@safalpartners.com)



(304) 550-8220



[katie.adams@safalpartners.com](mailto:katie.adams@safalpartners.com)



(757) 753-5352



**Visit us online**  
[Dolcoe.safalapps.com](http://Dolcoe.safalapps.com)

