

# What Does Workforce Really Know About Apprenticeship?

*Insight and Opportunities to Strengthen  
Workforce Practitioner Knowledge of Registered Apprenticeship*



# Who We Are

USDOL Registered Apprenticeship (RA) Technical Assistance (TA) Center of Excellence on Strategic Partnerships and System Alignment

We provide no-cost TA services, products aimed at:

- Accelerating RA strategic partnerships
- Increasing alignment between apprenticeship and workforce and education systems
- Increasing use of RAP model in WIOA
- Boosting WIOA funding support for RA through co-enrollment
- Increasing workforce system participation in RAPs
- Doubling current statewide WIOA participation for RAPs



# Baseline Report & Knowledge Gaps

## Gaps Fell Into Four Areas:



Basic Knowledge



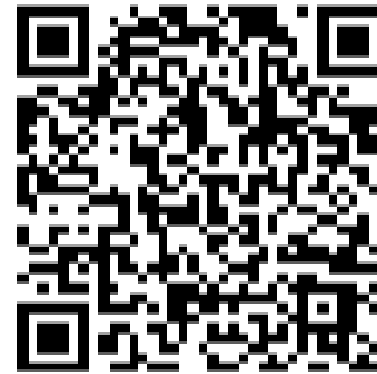
System Knowledge



Funding Knowledge



Sharing Knowledge



[dolcoe.safalapps.com/resources/workforce](https://dolcoe.safalapps.com/resources/workforce)



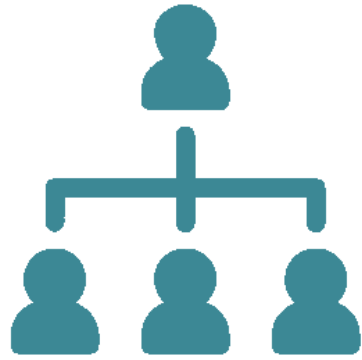
# Basic RA Knowledge Gaps

↓	↓	↓		
45%	41%	40%	38%	35%
DO NOT UNDERSTAND				
the responsibilities of an Apprenticeship program sponsor	the supervision requirements for apprentices in registered apprenticeship programs	what registered apprenticeship programs exist in their local area	related instruction (RI) requirements of Apprenticeship programming	the difference between registered apprenticeship and other work and learn models
"Very Little" = 36.21% "None" = 8.82%	"Very Little" = 31.13% "None" = 10.15%	"Very Little" = 33.02% "None" = 7.4%	"Very Little" = 30.81% "None" = 7.66%	"Very Little" = 28.07% "None" = 7.28%

# What Makes It Apprenticeship?



Employer  
involvement



Structured  
on-the-job  
learning



Related  
instruction



Rewards for  
skill gains



National  
Occupational  
Credential



# Apprenticeship Benefits

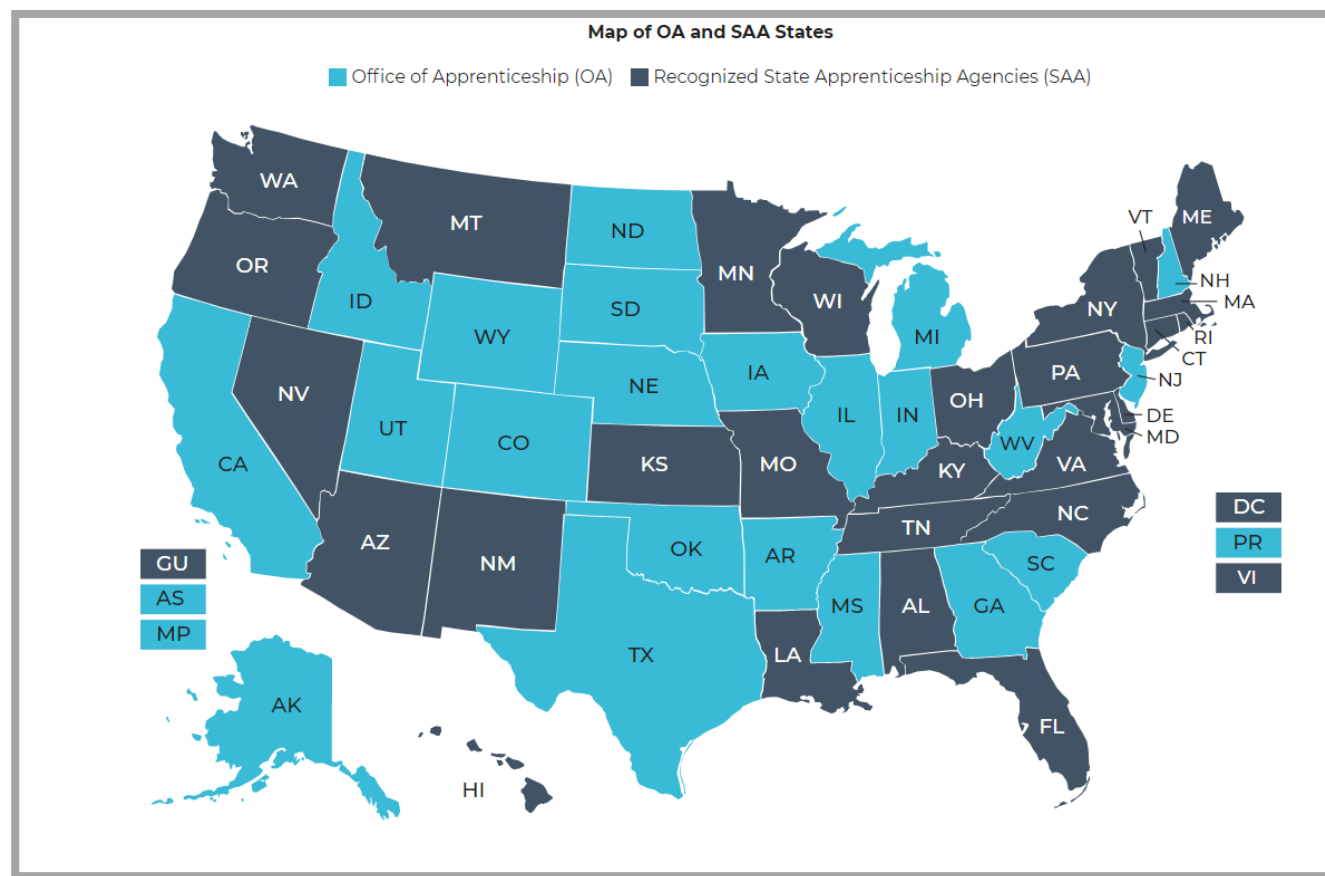
## For Employers, Registered Apprenticeship....

- Generates positive ROI - \$1.47 for every \$1
- Reduces turnover and drives higher worker loyalty rates - 92% are retained
- Creates comprehensive workplaces - widen the pool of candidates
- Creates a platform for stronger relationships - education and workforce partners
- Provides access to unique federal and state funding and support



Source: \*USDOL Office of Apprenticeship

# Your OA/SAA Office = Local RAPs



<https://www.apprenticeship.gov/about-us/state-offices>



# RA System Knowledge Gaps

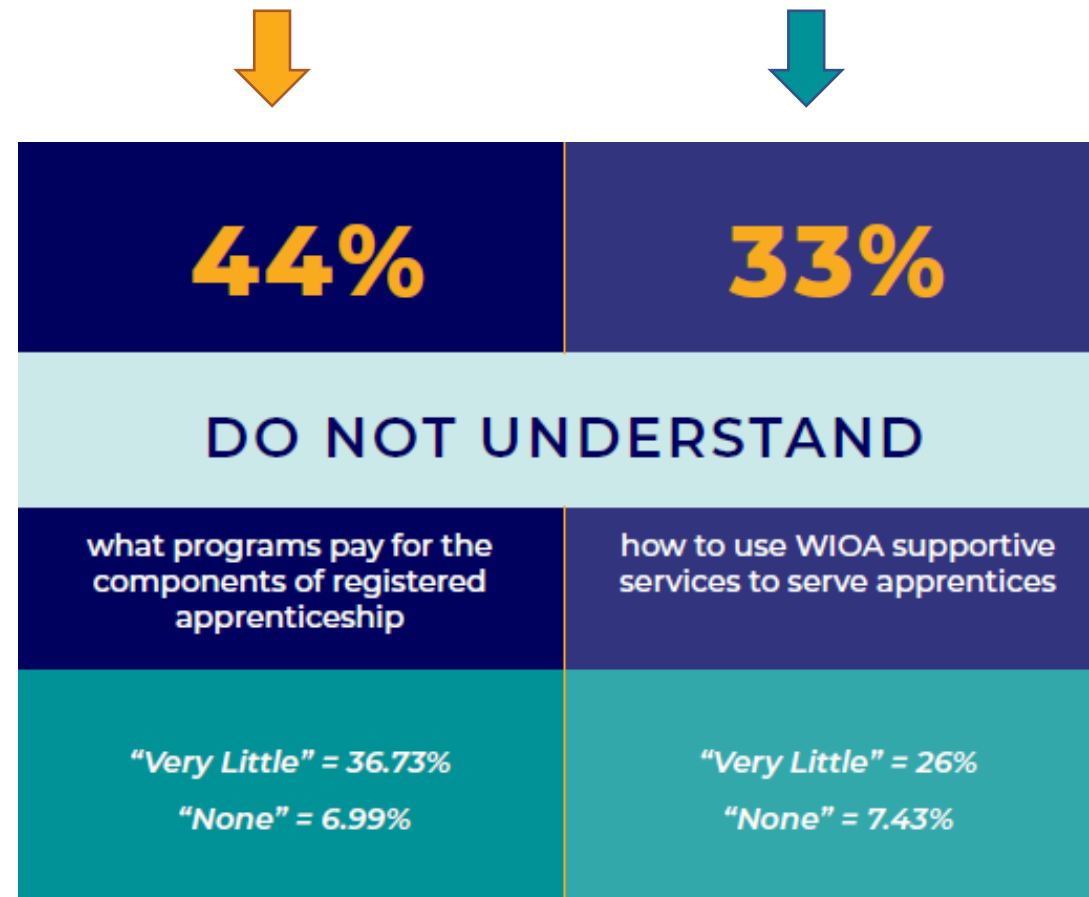
## Takeaways

- OA/SAA staff is your RA partner!
- [TEGL 13-16](#)
- ETPL providers can be RA related instruction providers; ITAs can fund training portion of RAP to entity providing training

↓	↓	↓	
51%	46%	46%	43%
DO NOT UNDERSTAND			
the role of USDOL OA or an SAA	how registered apprenticeship correlates with key WIOA performance measures	the relationship between their state or local Eligible Training Provider List (ETPL) and the related instruction (RI) component of registered apprenticeship	how their state or territory's Unified or Combined WIOA plan or local workforce board WIOA plan relates to Apprenticeship
"Very Little" = 38.88%	"Very Little" = 35.87%	"Very Little" = 34.48%	"Very Little" = 34.01%
"None" = 12.38%	"None" = 10.09%	"None" = 11.21%	"None" = 9.41%



# Funding Knowledge Gaps



# Sharing Knowledge Gaps

↓	↓	↓
47%	42%	30%
DO NOT UNDERSTAND HOW TO		
convene partners locally	communicate benefits of registered apprenticeship to employers	communicate the benefits of registered apprenticeship to job seekers
"Very Little" = 37.46% "None" = 9.18%	"Very Little" = 31% "None" = 11.09%	"Very Little" = 24.22% "None" = 6.08%

# Resources



Guide to Identifying Partners  
<https://safal.partners/Partner-Resource>

Partner Questionnaire  
<https://safal.partners/Partnership-questionnaire>



## REGISTERED APPRENTICESHIP (RA) PARTNER PROFILE QUESTIONNAIRE

This questionnaire is intended to help you build a network in your area around Registered Apprenticeship (RA). With the information gathered here, your board should be better able to engage with and convene RA stakeholders to expand RA program opportunities. It is designed to be used in conjunction with the USDOL RA TA Center of Excellence "Workforce Board Guide to Identifying Pre-Apprenticeship and Apprenticeship Partners" publication. This publication and more information on the Center can be found online at [dolcoe.safalapps.com](https://dolcoe.safalapps.com).

Organization Name:

Website:

Organization Type:

- ☐ Employer
- ☐ Union / labor organization
- ☐ Educational institution / training provider
- ☐ Intermediary/Technical assistance (TA) provider
- ☐ Other (please describe):

Primary Point of Contact

Name:

Title:

Email:

Phone (optional):

Which role(s) does your organization currently play in RA? Please check all that apply:

- ☐ RA program sponsor
- ☐ RA employer
- ☐ On-the-Job Learning (OJL) provider
- ☐ Related Instruction (RI) provider
- ☐ Intermediary/Technical Assistance (TA) provider
- ☐ Other (please describe):



# Actions to Take

- Contact local [DOL Office of Apprenticeship or State Apprenticeship Agency](#)
  - Learn active RAPs in area
  - Request training, materials on communicating RA benefits for jobseekers, employers
- Visit [Apprenticeship.gov](#) for tools, [funding information & opportunities](#)
- Consider developing RA-focused committee



# Contact Us



**Katie Adams**

Chief Delivery Officer,  
Safal Partners

[katie.adams@safalpartners.com](mailto:katie.adams@safalpartners.com)



**Melissa Aguilar-  
Southard**

Senior Director,  
Safal Partners

[melissa.aguilar-  
southard@safalpartners.com](mailto:melissa.aguilar-southard@safalpartners.com)



Access Resources, Request TA:  
<https://dolcoe.safalapps.com>

Scan to Become a Center Partner!





# THANK FOR JOINING US

*Email us your questions at [RA\\_COE@SafalPartners.com](mailto:RA_COE@SafalPartners.com)*

For more information, visit: [dolcoe.safalapps.com](https://dolcoe.safalapps.com)

